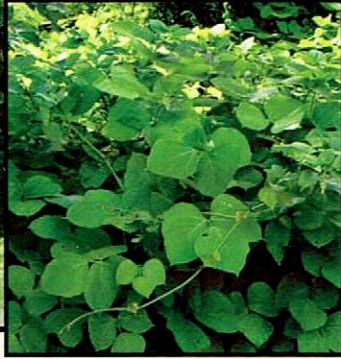


WANTED

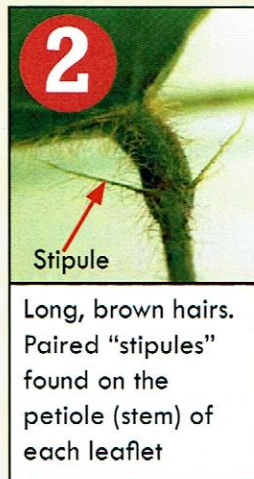
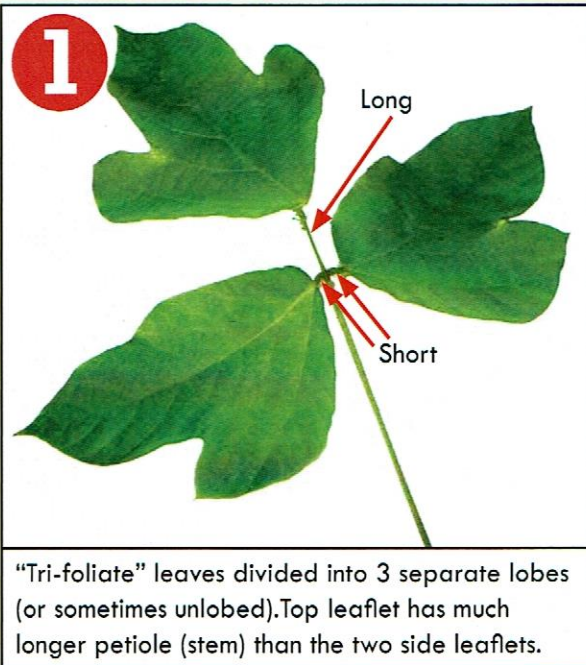
KUDZU (*Pueraria montana* var. *lobata*)



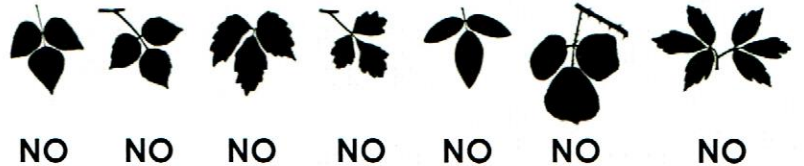
Kudzu is a highly invasive perennial semi-woody vine, native to Asia, that was discovered growing in Massachusetts back in the 1980s. Since then, several small populations have been found across the eastern half of the state. At its peak, a kudzu vine can grow more than one foot in a single day. The vines climb over trees and fences, shading out other plants, and outcompeting and overgrowing native species, causing ecological and economic damage. Your help is needed to prevent this plant from becoming established in Massachusetts.

Please help us find, track, and control this invasive plant!

FOUR IDENTIFYING TRAITS:

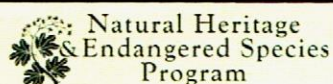


Leaf shapes of other plants (these **do not** need to be reported):



If you find a plant with traits 1 **and** 2 (and either 3 **or** 4), note its location, take photos or a sample, and **REPORT IT**:

- Visit <http://massncr.org/pests> (click "Report Pests")
- Call the MDAR Plant Pest Hotline: 617-626-1779



Photos courtesy of: Irina Kadis, Ted Bodner (Southern Weed Science Society, Bugwood.org) and J. Forman Orth (Mass. Dept. of Agricultural Resources)